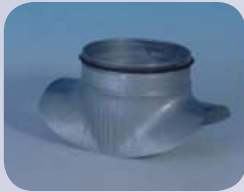


Saddles 90° pressed/formed with seal (STE/U)
 Rectangular saddles (KS/U)

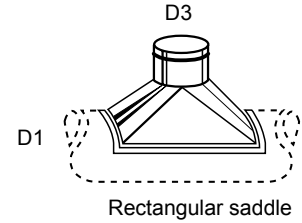
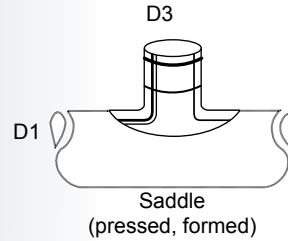
Typ STE/U, KS/U



Saddle (pressed)



Saddle (formed)



D3	SADDLE 90° PRESSED (STANDARD)		SADDLE 90° FORMED	RECTANGULAR SADDLE
	D1	€/piece	€/piece	€/piece
80	80-280	3,33	6,76	24,93
100	100-280	3,81	6,76	24,93
125	125-280	4,43	8,15	29,08
140	140-355	5,14	8,15	29,91
150	150-355	4,99	8,15	30,74
160	160-355	5,39	8,15	31,99
180	180-355	6,24	8,76	33,23
200	200-560	7,09	8,76	34,07
224	224-560	8,86	9,69	35,31
250	250-560	9,63	11,68	44,03
280	we deliver as formed		12,61	47,78
300	300-560	11,76	13,83	51,93
315	315-560	12,74	14,45	56,50
355	we deliver as formed		15,38	58,16
400	we deliver as formed		16,75	63,14
450	we deliver as formed		19,37	73,12
500	we deliver as formed		23,38	83,92
560	we deliver as formed		25,53	88,48
600	we deliver as formed		27,20	97,63
630	we deliver as formed		29,53	108,01
710	we deliver as formed		35,22	124,63
800	we deliver as formed		44,45	174,48
900	we deliver as formed		54,14	228,48
1000	we deliver as formed		75,82	278,33
1120	we deliver as formed		103,21	380,12
1250	we deliver as formed		136,63	498,51
1400	we deliver as formed		153,03	623,13
1500	we deliver as formed		163,96	716,61
1600	we deliver as formed		174,89	810,08

D1, D3 = Diameter (mm)

IMPORTANT: In the order please give us the diameter of circular duct!

Ordering example: **STE-D1/D3/U**
KS-D1/D3/U

SURCHARGE SADDLES	
	Price saddle 90° formed +
Saddle 60° formed	5,00%
Saddle 45° formed	10,00%
Saddle 30° formed	15,00%

AI Execution from AI: factor 2

V2A Execution from V2A: factor 4,5

V4A Execution from V4A: factor 7