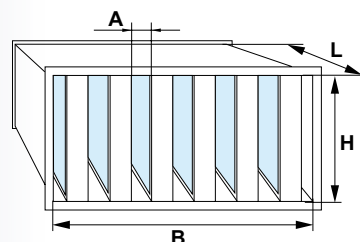
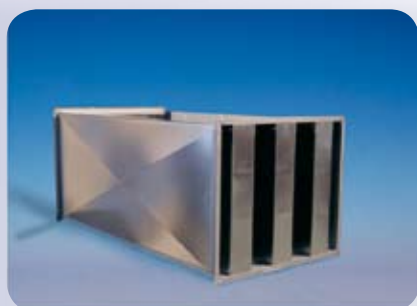


## Rectangular straight silencers



### SILENCER (200 mm INSULATION MATERIAL) - rectangular -

Number of inputs		1	2	3	4	5	6	7	8
Silencer width B	from:	280 mm	560 mm	800 mm	1120 mm	1400 mm	1600 mm	1960 mm	2240 mm
	to:	560 mm	800 mm	1120 mm	1400 mm	1600 mm	1960 mm	2240 mm	2400 mm
Distance between inputs A	from:	80 mm	80 mm	80 mm	80 mm	80 mm	80 mm	80 mm	80 mm
	to:	200 mm	200 mm	200 mm	200 mm	200 mm	200 mm	200 mm	200 mm
Silencer length L	Silencer height H	€/piece	€/piece	€/piece	€/piece	€/piece	€/piece	€/piece	€/piece
500	300mm	89,53	134,87	177,04	221,19	264,92	248,01	282,39	301,04
	450mm	98,74	148,51	195,08	240,03	288,20	331,97	362,48	390,95
	600mm	107,19	161,78	210,75	260,53	325,35	358,04	392,18	424,29
	900mm	134,87	191,49	248,06	306,28	361,68	420,66	459,61	498,53
	1200mm	160,18	226,01	296,23	362,48	431,89	498,53	550,33	598,49
	1500mm	193,66	266,85	335,18	393,61	484,50	564,78	622,58	679,15
750	300mm	100,35	152,53	201,50	254,91	304,25	295,23	326,92	391,09
	450mm	111,59	170,99	226,01	283,38	336,79	390,95	424,67	459,19
	600mm	124,05	187,05	247,68	310,68	369,70	428,68	468,44	508,58
	900mm	157,77	232,00	305,86	378,53	451,16	524,21	575,21	626,17
	1200mm	187,05	272,94	357,66	441,15	526,24	609,73	674,33	736,57
	1500mm	233,84	339,91	404,22	501,74	595,28	692,80	765,05	838,10
1000	1800mm	276,30	421,32	504,57	626,97	749,79	872,24	972,16	1 073,31
	300mm	111,21	170,61	227,99	288,20	345,19	348,55	424,06	468,11
	450mm	126,04	193,09	258,92	325,55	388,97	449,98	491,30	530,26
	600mm	140,49	214,34	285,41	357,66	428,68	496,92	543,10	588,06
	900mm	180,25	265,34	352,42	437,14	521,81	607,70	666,31	728,12
	1200mm	214,34	315,11	415,46	526,24	626,97	725,33	799,99	875,45
1250	1500mm	264,54	375,94	472,46	596,89	706,07	822,47	907,94	993,84
	1800mm	306,99	449,31	590,04	745,40	890,28	1 034,40	1 151,99	1 271,22
	300mm	124,05	191,06	257,31	323,94	389,77	413,29	489,53	528,98
	450mm	140,91	220,76	295,42	369,70	442,76	516,19	563,98	608,51
	600mm	157,34	242,44	325,55	407,01	486,11	565,16	619,37	671,93
	900mm	209,95	318,70	424,67	531,06	646,24	744,98	823,65	900,72
1500	1200mm	251,69	373,29	496,92	632,21	755,84	879,84	975,80	1 069,73
	1500mm	273,89	436,90	567,56	719,71	855,38	998,66	1 108,64	1 218,24
	1800mm	318,75	476,99	666,19	917,20	1 100,61	1 285,67	1 439,81	1 593,14
	300mm	127,50	216,75	290,61	366,07	438,74	471,56	481,29	571,53
	450mm	151,11	247,26	331,55	414,66	496,92	580,83	634,62	683,59
	600mm	170,00	273,75	367,29	458,81	550,33	641,42	704,46	762,26
1500	900mm	231,39	360,45	479,26	600,48	716,50	870,21	928,01	1 011,12
	1200mm	288,06	423,49	564,78	719,29	856,56	996,67	1 107,46	1 214,23
	1500mm	415,56	531,34	660,69	818,46	975,00	1 131,92	1 259,18	1 384,79
	1800mm	495,83	594,10	742,33	1 042,01	1 244,73	1 449,82	1 624,02	1 797,04

Ordering example: **KSD-200-(number of inputs)-B/H/L**



Execution from AI: factor 2



Execution from V2A: factor 4,5



Execution from V4A: factor 7